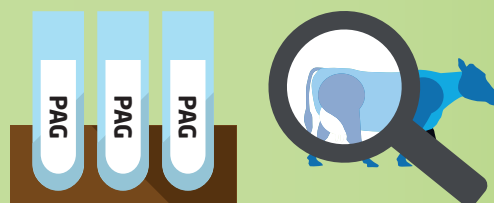


# The accuracy of using milk samples taken from Robots for milk pregnancy testing



## How does the Milk Pregnancy Test work?



The test detects highly specific markers of pregnancy: **pregnancy-associated glycoproteins (PAGs)**.

PAGs are only produced in the presence of an embryo or fetus, making the test highly accurate from 28 days post insemination and throughout gestation, using your regular milk recorded samples.

## Advantages of using the milk recorded samples from Robots for pregnancy testing



Pregnancy results with no need to block the cows: less stress and traffic jams at the robot.



Less somatic cells and lameness cases as cows spend less time standing and waiting.



Early and frequent pregnancy checks result in more cows in calf and better farm profitability.

Test with Confidence™

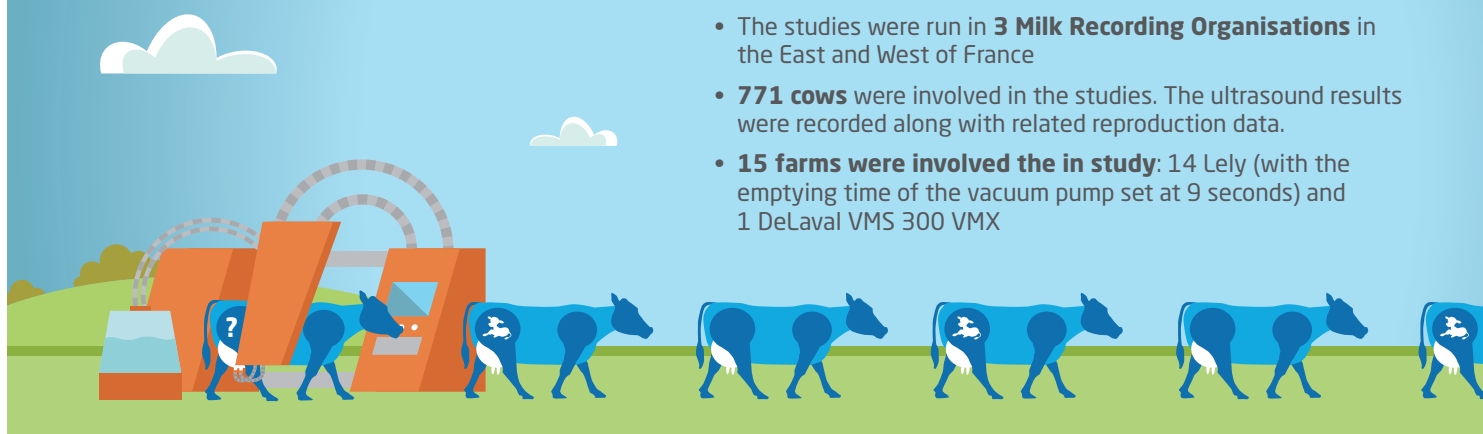
  
Cattle Information Service

**IDEXX**  
Alertys™ Milk Pregnancy Test

# RELIABILITY OF MILK PREGNANCY TEST IN MILKING ROBOTS

## Result of 3 studies carried out in France

- The studies were run in **3 Milk Recording Organisations** in the East and West of France
- **771 cows** were involved in the studies. The ultrasound results were recorded along with related reproduction data.
- **15 farms were involved in the study:** 14 Lely (with the emptying time of the vacuum pump set at 9 seconds) and 1 DeLaval VMS 300 VMX



Milk Recording Organisation	Farm	Number of tested cows	Test result of pregnant cows			Test result of open cows		
			Pregnant	Recheck	Open	Open	Recheck	Pregnant
BCEL ouest <sup>(1)</sup> <i>Study carried out from February - July 2019</i>	A (Lely A5)	51	22	1	0	25	0	3
	B (Lely A3 Next)	60	34	1	0	18	3	4
	C (Lely A3 Next)	101	50	0	0	46	2	3
	D (DeLaval 300 VMX)	41	22	0	0	19	0	0
EILYPS <sup>(2)</sup> <i>Study carried out from October 2017 - February 2018</i>	E (Lely A4)	32	19	0	0	13	0	0
	F (Lely A3)	84	61	0	0	21	1	1
	G (Lely A4)	63	38	0	0	19	5	1
	H (Lely A4)	75	68	0	0	3	3	1
	I (Lely A4)	37	30	0	0	3	1	3
	J (Lely A4)	27	17	0	0	8	2	0
	K (Lely A4)	47	25	0	0	20	1	1
3CE Alsace Moselle <sup>(3)</sup> <i>Study carried out from June - July 2018</i>	L (Lely)	30	16	0	0	12	1	1
	M (Lely)	47	26	0	0	17	4	0
	N (Lely)	42	23	0	0	10	6	3
	O (Lely)	34	20	0	0	14	0	0

	Pregnant cows	Open cows
Test result: Pregnant	471	21
Test result: Open	0	248
	Sensitivity 100%	Specificity 92,2%
		Recheck 4,0 %



For more information about the Milk Pregnancy Test, contact  
CIS on 01923 695319 or [www.thecis.co.uk](http://www.thecis.co.uk)

Test with Confidence™



**IDEXX**  
Alertys™ Milk Pregnancy Test